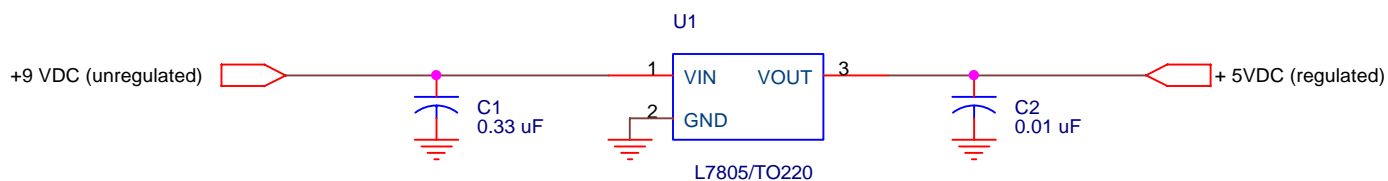


ON BOARD POWER SUPPLY



NOTES :

1. Regulator should be used with heat-sink
2. Use 4-40 nut as spacer to lift heat-sink off of board

Title		
VECTOR BOARD POWER SUPPLY		
Size	Document Number	Rev
A	<Doc>	
Date:	Wednesday, March 06, 2002	Sheet 1 of 1